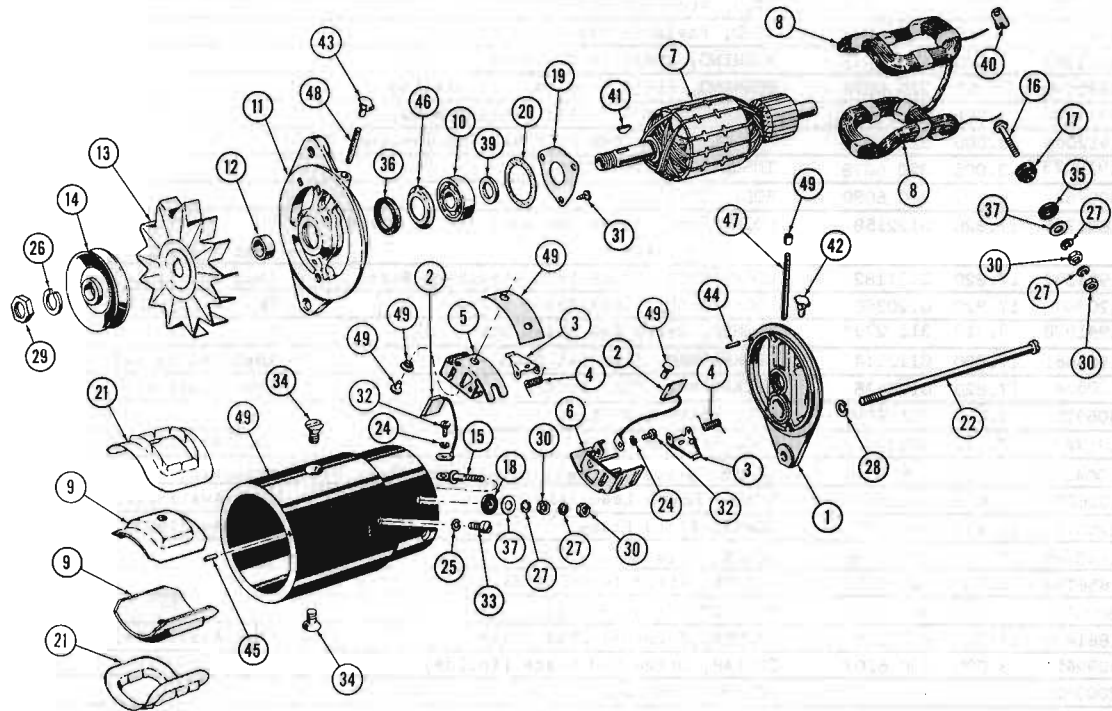


GROUP 3



GENERATOR 60 THRU 62 10-20-80 (HEAVY DUTY)
(45 AMP.)(NOT LOW CUT-IN)(REFER NOTE 3.005-1)

A.M. No. 315 5796

DELCO-REMY No. 1102123

KEY NO.	DELCO-REMY Number	A.M. Group	A.M. PART Number	DESCRIPTION	QUAN. REQ.
	1939584	3.005	320 6059	FRAME ASSY., (Incl. all parts listed below which are coded with a #)1	1
	1934300	3.005	320 0190	FRAME ASSY., (Incl. all parts listed below which are coded with a *)1	1
1				#FRAME, Commutator End	1
2	1932506			BRUSH	2
2		3.005	320 2029	BRUSH SET (Incl. 2-1932506)	1
3	1878183	3.005	320 6058	ARM, Brush	2
4	1908829	3.005	311 5591	SPRING, Brush	2
5	1922288	3.005	320 6059	HOLDER, Brush (Ground) (Package)	1
6	1922289	3.005	320 6060	HOLDER, Brush (Insulated)(Package)	1
7	1939837	3.005	320 6061	ARMATURE	1
8	1935779	3.005	320 6063	COIL, Field (Incl. parts coded with a +)	1
9	1911961	3.005	320 6066	SHOE, Pole	2
10	954378	3.005	311 3686	BEARING, Drive End Ball	1
11				*FRAME, Drive End	1
12	1858603	3.005	320 6067	COLLAR, Drive End Space (Outside)	1
13	1940994	3.010	315 5797	FAN (Less Pulley)	1